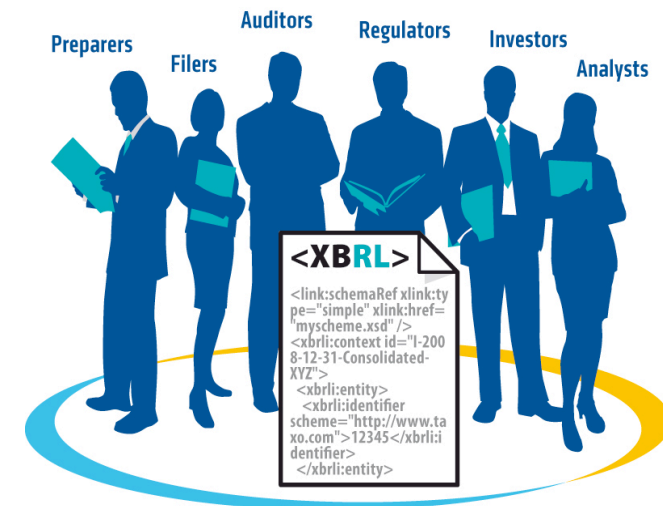




INVOKE XBRL Solutions for every type of users

Case studies & Live demo



Agenda



- ▶ XBRL solutions for **regulators**

Focus on the Filing portal: on-going projects & live demo

- ▶ XBRL solutions for **filers**

Focus on packaged solutions

- ▶ XBRL solutions for **analysts**

Focus on next generation XBRL analytical tools

Agenda



- ▶ XBRL solutions for **regulators**

Focus on the Filing portal: on-going projects & live demo

- ▶ XBRL solutions for **filers**

Focus on packaged solutions

- ▶ XBRL solutions for **analysts**

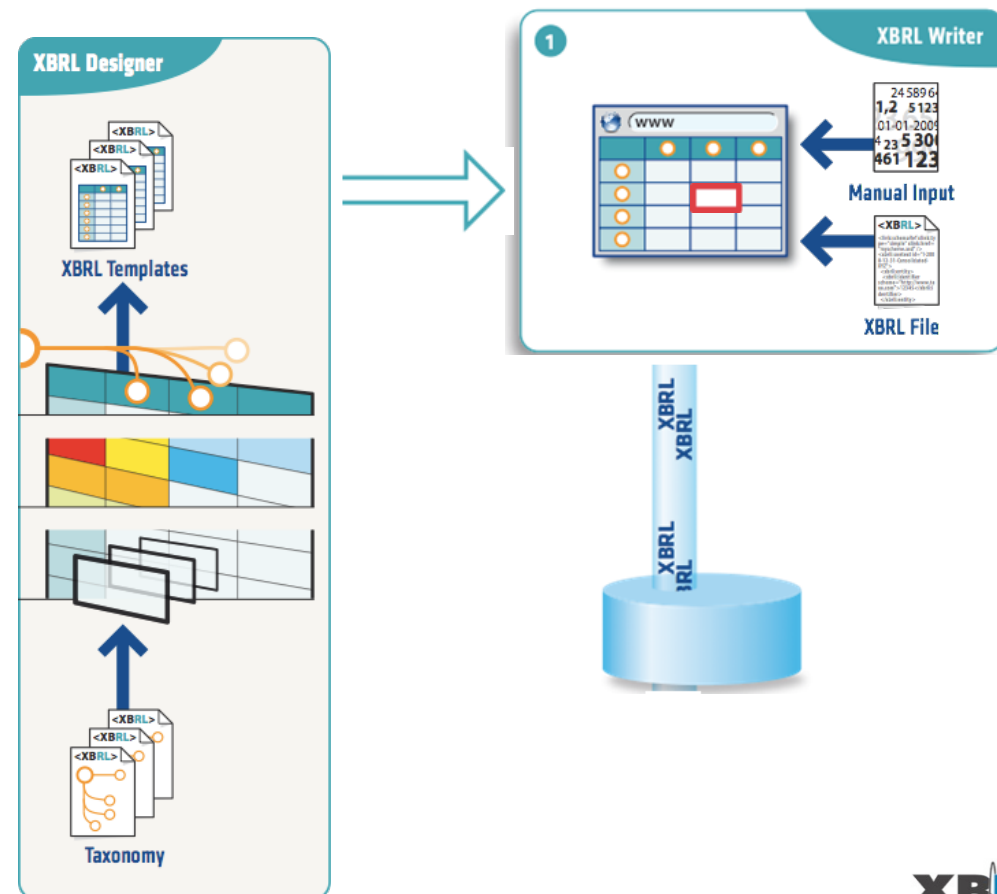
Focus on next generation XBRL analytical tools

XBRL Solutions for regulators



➔ Focus on the Filing portal

Build your own web portal for filers by using native XBRL tools



XBRL Solutions for regulators



➔ Focus on the Filing portal

Demo Live:

Insurance example based on the new **Solvency II** taxonomy
(provided by the EIOPA in the frame of their consultation paper)

Challenge:

10 minutes to build from scratch an XBRL web portal based on the Solvency II taxonomy using **INVOKE XBRL Suite**
(included features: manual data input, Excel import and XBRL data controls)

XBRL Solutions for regulators



➔ **Focus on the Filing portal**

INVOKE XBRL Suite

[Live Demo]

XBRL Solutions for regulators

➔ **Focus on the Filing portal**

Key benefits of using INVOKE XBRL Suite

Thanks to a new implementation model:

- ▶ **Cut down implementation costs**
Save hundreds of days of implementation! (zero coding)
- ▶ **Cut down maintenance costs**
Easy to adapt in case of regulatory changes
- ▶ **Eliminate deployment costs**
A simple web browser is all you need to get the most of XBRL.

Agenda



- ▶ XBRL solutions for **regulators**

Focus on the Filing portal: on-going projects & live demo

- ▶ XBRL solutions for **filers**

Focus on packaged solutions

- ▶ XBRL solutions for **analysts**

Focus on next generation of XBRL analytical tools

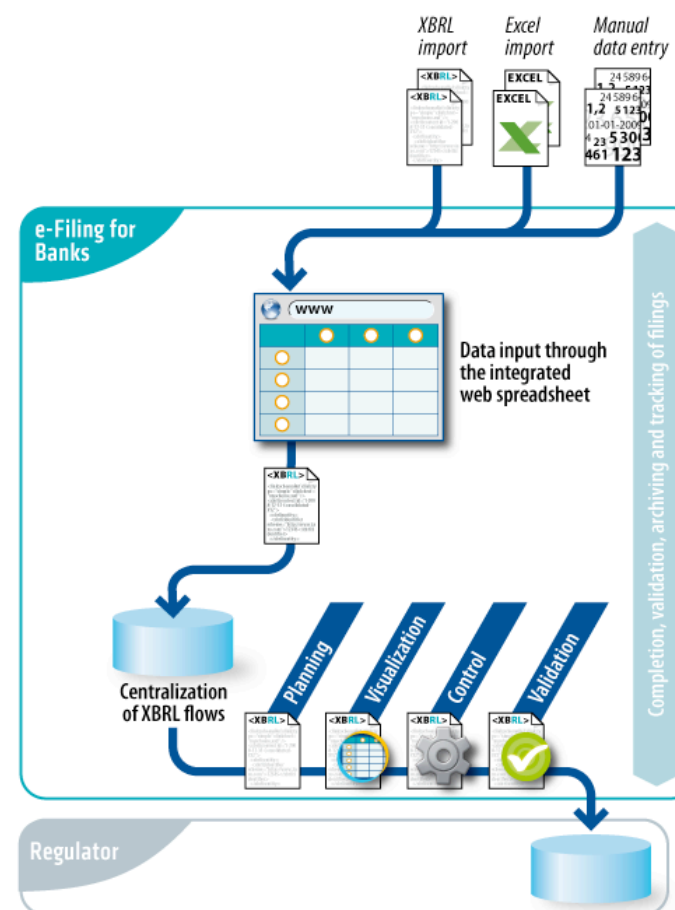
XBRL Solutions for filers



➔ Focus on packaged solutions

Case 1: A simple solution for regulatory filing

- ▶ **Solution: INVOKE e-Filing portal**
- ▶ A web portal for online completion, validation, monitoring of deadlines



XBRL Solutions for filers



➔ **Focus on packaged solutions**

INVOKE e-Filing

[Live Demo]

XBRL Solutions for filers

➔ Focus on packaged solutions

Key benefits of using INVOKE e-Filing

- ▶ **Eliminate deployment costs**
Available in cloud computing mode
User-oriented and easy to use (only 1/2 day of training needed)
- ▶ **Enhance data quality and reliability**
Controls at source in real time
Can be shared between filers and auditors
- ▶ **Cut down maintenance costs**
Easy to adapt in case of regulatory changes
Multi-taxonomy system

XBRL Solutions for filers



➔ **Focus on packaged solutions**

Case 2: An end-to-end solution for regulatory and internal reporting

Case study:
The BPCE project



XBRL Solutions for filers



➔ **Focus on packaged solutions**

BPCE project – The Context



- In summer 2009, 2 large banking groups merged to create BPCE:

Banques Populaires + Caisses d'Épargne

- BPCE is the 2nd french banking group
- At the same time, disclosure of the new SURFI regulation (deadline June 2010)

XBRL Solutions for filers



➔ Focus on packaged solutions

BPCE project – The Context



Banking groups in France have to prepare 3 different Reporting in XBRL:

- **COREP** (COmmon solvency ratio REPorting framework – BASEL II)
 - 31 dimensions (including 15 typed dimensions)
- **FINREP** (FINancial RePorting framework – IFRS)
 - 12 dimensions
- **SURFI** (local prudential and statistical reporting framework)
 - 37 dimensions (including 5 typed dimensions)
 - Formulae

XBRL Solutions for filers



➔ **Focus on packaged solutions**

BPCE project – The Challenges



- Centralize and control regulatory declarations of the group
 - 80 subsidiaries with heterogeneous equipment
- Produce the regulatory declaration of the group's central institution
- Perform customized analyses

XBRL Solutions for filers



➔ Focus on packaged solutions

BPCE project – The Solution



The solution is based on 2 complementary Invoke solutions:

invoke
XBRL Filing Portal

- Web portal
- Centralization of XBRL reports

invoke
FAS Regulatory

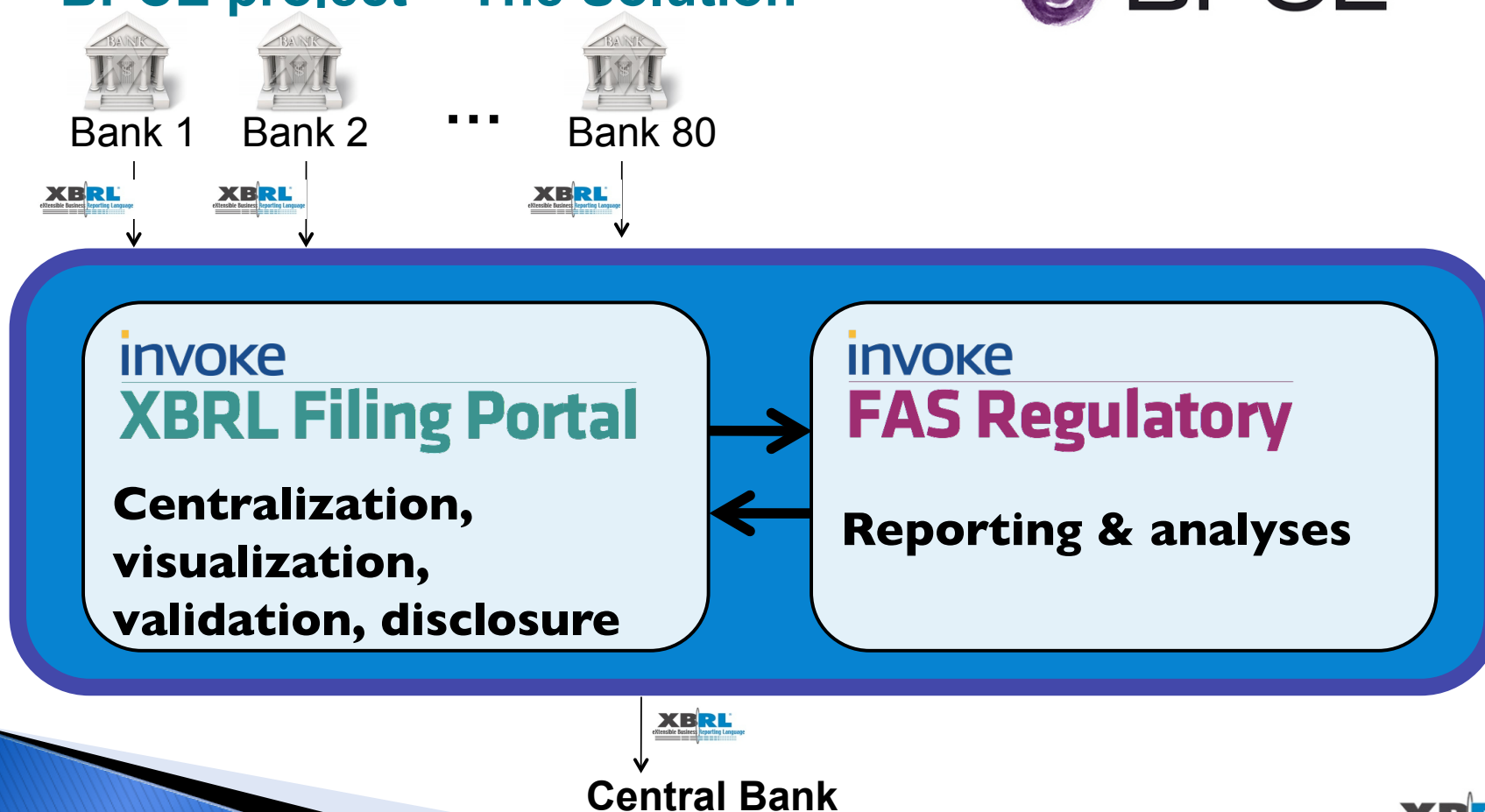
- Reporting system
 - Production of the consolidated regulatory declaration of the group
 - Production of internal analyses (multi-periods, multi-entities, multi-taxonomies)

XBRL Solutions for filers



➔ Focus on packaged solutions

BPCE project – The Solution



XBRL Solutions for filers



➔ **Focus on packaged solutions**

BPCE project – The Benefits



- A totally secure filing process for the whole group
- A regulatory data center without any development
- Not only a regulatory reporting system but also an internal reporting solution
- Improvement of data quality (qualitative information)

Agenda



- ▶ XBRL solutions for **regulators**

Focus on the Filing portal: on-going projects & live demo

- ▶ XBRL solutions for **filers**

Focus on packaged solutions

- ▶ XBRL solutions for **analysts**

Focus on next generation XBRL analytical tools

XBRL Solutions for analysts



➔ **Focus on next generation XBRL analytical tools**

INVOKE XBRL Insight

[Live Demo]



XBRL Solutions for analysts

➔ **Focus on next generation XBRL analytical tools**

Key benefits of using native XBRL analytical tools

- ▶ Taxonomy independant
- ▶ Zero coding
- ▶ 100% Web
- ▶ 100% XBRL (easy to maintain, multilingual, controls)

Thank you for your attention



XBRL Reader/Writer web demo

Log In

Log in to Invoke XBRL Reader/Writer web demo.

Email

Password

Not registered yet ? [Learn more](#) or [register now](#)

[Forgot password ?](#)

Submit

**Try Invoke XBRL Reader/Writer
online for free at
www.invokexbrl.com**

[Learn More](#) • [Privacy Policy](#) • [Invoke Website](#) • [Contact Us](#)
Copyright © 2009, Invoke SA. All rights reserved